

March 2016



New: MxManagementCenter (MxMC) Version 1.2

Event histogram, AVI export, user log, connection monitoring, configurable alarms, Post VM and much more

New: Firmware Update To Version MX-V4.4.0.x (For All Cameras x14/24, x15/25)

Thermal overlay for M15/S15 Thermal, calibratable temperature measurement for Thermal TR, MxAnalytics with new event "Restricted Area" event, visualization with MxActivitySensor, support for MxMC 1.2 and much more



New: Indoor Dome v25, On-Wall And Vandalism Set

6MP single lens ceiling camera with dome design, optionally available with on-wall set with audio and/or vandalism set with stainless steel ring and reinforced dome



New: MxTubeMount & MxTube Camera Hanging Mount With Aluminum Tube (1/2 m)

For M15, M25, D25, Q25, c25, p25, v25 and PTMount (Thermal)



New: D15 Body Including Standard And XL Dome

New: Replacement Domes XL/Vandalism For (Dual)Dome Cameras

Contents

New MOBOTIX Products From March 2016

Page

1. MxManagementCenter (MxMC) Version 1.2	3
2. Camera Software 4.4.0.x For All MOBOTIX Cameras	5
3. New v25 Indoor Ceiling Camera With Optional On-Wall and Vandalism Set	7
4. MxTubeMount & MxTube Camera Hanging Mount	13
5. D15 Body Including Standard And XL Dome	14
6. XL Replacement Domes/Vandalism For (Dual)Dome Cameras	15
7. Timetable	16

Please note: The following document is solely intended for MOBOTIX partners as information and to assist in demand planning and may not be published in its current format (in digital form or as a hard copy).

General notes: Sold to distributors or commercial clients only • Prices excluding VAT/sales tax ex-factory Langmeil, Germany • MOBOTIX is not responsible for any errors or omissions in this document
© MOBOTIX AG 2016

Copyright notice: All rights reserved. MOBOTIX, the MOBOTIX AG logo and MxAnalytics are trademarks of MOBOTIX AG registered in the European Union, the U.S. and in other countries.

1. MxManagementCenter (MxMC) Version 1.2



Event Histogram For Rapid Event Search:

In MxMC 1.2 and up, the playback views (individual camera or grid) also include a collapsible sidebar with an event histogram. It provides a graphical representation of the frequency distribution of the selected events and cameras/groups over a chosen period of observation. The event histogram with zoom function (integrated “magnifying glass” for a selected time segment) gives the user a quick overview of irregularities at a specific time and location.

The database for the event histogram is decentralized in every individual camera. In order to fully utilize the event histogram function in MxMC 1.2, the camera has to have the latest firmware, MX-V4.4.0.x, and the microSD card has to be properly formatted (via the admin menu in the camera software).



Other New Functions in MxMC 1.2:

- AVI export of video data:** MxMC makes it possible to export an entire video as an overview or an image excerpt in AVI format, as well. This new function supports flexible exporting in a range of different resolutions, frame rates and virtual PTZ views.
- User log:** Thanks to its complete logging function, MxMC makes it possible to log actions such as starting playback, exporting, turning on sound, etc. This means that all user actions can be documented and a complete chain of evidence can be generated.

- Configurable alarms (local MxMC setting for application behavior):** For displaying new events that have just occurred, there is the additional option to display the red alarm window (with/without alarm sound) on the MxMC workstation. With MxMC 1.2, these alarms can be restricted to certain cameras or even to select events and timetables. Also important, the alarms in MxMC are a local configuration of the program behavior on the current workstation and not a general setting that is stored in the camera. An event can also occur without triggering an alarm, but every alarm has to be triggered by an event. Regardless of the individual alarm settings, all recorded events from the integrated cameras can be accessed via the search function in MxMC.
- Lost connection detection:** Like for individual alarms, MxMC can also send users an obvious visual and/or audio message (pop-up window, warning signal) in real time if the connection to one or more video sources is lost (as a result of a disconnected cable, local power failure, or switch failure, for example). Additionally, the latest snapshot images from all cameras can be permanently saved on the local hard drive of the MxMC computer; if the connection is lost, they will be automatically displayed in a pop-up window in order to provide helpful images as proof if the camera is stolen or vandalized.
- Post VM (post video motion detection):** Users can also search the video recordings from a camera after the fact with VM windows in MxMC 1.2; they can use the high speed and time lapse function to look for special changes in the images (VM = video motion). This is how, for example, a VM window is placed above a door, and only the recordings showing something happening to the door will be shown.

The newest MxMC version, 1.2, including release notes on this and all other changes, is scheduled for release to download free of charge starting in **April 2016**: www.mobotix.com >Support > **Software Downloads > MxMC**.

MxManagementCenter 1.2 For Windows And OS X:

Description	Release	MSRP EUR	Available
MOBOTIX video management software MxManagementCenter (MxMC) • Version 1.2 for Windows (Vista or later) • Language packs: English, German, French, Spanish, Italian, Russian, Turkish, Portuguese, Japanese • System requirements: 2 GHz processor (min.), at least 2 GB RAM, video card that supports OpenGL V2.1 • Download free of charge (for 32-bit and 64-bit Windows): www.mobotix.com > Support > Software Downloads > MxManagementCenter	1.2	0	April 2016
MOBOTIX video management software MxManagementCenter (MxMC) • Version 1.2 for Mac OS X (10.7 or higher) • Language packs: English, German, French, Spanish, Italian, Russian, Turkish, Portuguese, Japanese • System requirements: 2 GHz processor (min.), at least 2 GB RAM, video card that supports OpenGL V2.1 • Download free of charge: www.mobotix.com > Support > Software Downloads > MxManagementCenter	1.2	0	April 2016

2. Camera Software 4.4.0.x For All MOBOTIX Cameras

New Standard Firmware For All MOBOTIX Cameras With P3 Processor (x14/24, x15/25)

MX-V4.4.0.x, the latest version of the camera firmware, is designed for use with all MOBOTIX cameras featuring the PXA 320 processor (P3) from the x15/x25 series equipped with a 6MP sensor, 5MP sensor or thermal sensor and the x14/xx24 series equipped with a 3MP or 1MP sensor.

In principle, this firmware has to be installed on all cameras that use **MxManagementCenter Version 1.2** to manage the new functions mentioned in the previous section.

Extended Feature List:

- **MxActivitySensor with new “show live position” function:** The sensor responds to purposeful, continuous movements and indicates the current direction of movement; now it also does so directly in the image, indicating the object currently triggering the sensor with a red arrow, if desired. This makes analyzing large monitored areas faster and more precise.



- **MxAnalytics behavioral detection with new “restricted area” event sensor:** In all ceiling-mounted and hemispheric c25, Q25 and S15M cameras, an event can be triggered in expanded object movement analysis if something enters a “digitally marked,” rectangular restricted area within the image. Up to 20 different restricted areas can be activated simultaneously for each camera by creating multiple profiles. Active restricted areas can be hidden or made visible within the image by selecting the desired color and transparency. Additionally, every time the sensor is triggered, the white and blue event icon can also be displayed, if desired. Comprehensive information on using MxAnalytics is provided in the PDF document **Compact Guide: MxAnalytics**, which is available to download free of charge on our website: www.mobotix.com > Support > MX Media Library > Compact Guide



- **Optimized temperature measurement for MOBOTIX thermal cameras M15/S15 with TR technology (thermal radiometry):** This camera software can be used to fine-tune individual parameters that influence the temperature measurement process in order to achieve the best possible temperature measurement results with the thermal camera. These parameters include the nature of the materials/surfaces of the object to be measured, for example. A comprehensive PDF document that describes the background and proper use of the MOBOTIX thermal image systems: **Compact Guide: Thermal technology** (www.mobotix.com > Support > MX Media Library > Compact Guide).



New thermal overlay function: With an M15 Thermal with a second image sensor module or an S15 with a thermal and image sensor module (with or without thermal radiometry/TR), the current thermal image can be directly superimposed over the current image sensor picture with an adjustable level of transparency, as long as the image areas from each of the cameras generally match. This makes it possible to view “hotspots” and immediately identify dangerous sources of heat or fire. This technology can be used very effectively in fire prevention in order to **identify and combat sources of danger** (smoldering fire, overheated devices) at an early stage.



Fig.: The person hidden in the shadows in the picture from the image sensor (left) becomes visible in the thermal overlay image (right).

MX-System Version 4.4.0.x and the release notes including information regarding all changes and improvements delivered by this release will be available to download from the MOBOTIX website free of charge starting on **Tuesday, 29 March 2016**:

www.mobotix.com > [Support](#) > [Software Downloads](#) > [Cameras](#) > [MX-System Release 4.4.0.x](#)

Home / Support

Home Company Products References Partners Investors **Support** Contact

Navigation

- Overview
- User Forum
- FAQ
- Support
- MX Media Library
- Image Database
- Demos
- Tutorials
- Manuals
- Spec Sheets
- Software Downloads**
- Version Questions
- Software News
- Planning Tools
- Printing Service
- Developer Tools

MOBOTIX Support And Services

MOBOTIX continually develops new software versions for cameras. Read our Software News to find out more about latest updates. And you can download these software updates FREE OF CHARGE from the Internet.

The section on [Support](#) provides you with the contacts and procedures you need if you have any questions on our products and technology. The [FAQs](#) give you answers to the most frequently asked questions. And in our [User Forum](#), you can exchange ideas and information with other MOBOTIX camera users.

You will find instruction manuals and quick information on the MOBOTIX cameras under [Manuals](#), and information material on our technology concept and company under [MX Media Library](#).

The section [Developer Tools](#) provides software developers and system integrators with a documentation on the MOBOTIX image compression format [MxPEG](#) and on the [MxPEG ActiveX](#) component. Furthermore we show you examples of the conversion and the display of [MxPEG](#) data.

So that you can see for yourself that MOBOTIX doesn't promise more than our technology can handle, [demo cameras](#) show you images taken by MOBOTIX cameras throughout the world.

3. New v25 Indoor Ceiling Camera With Optional On-Wall and Vandalism Set



With the new **v25**, MOBOTIX is now offering a **compact, all-round indoor camera** in a classic dome design. The v25 is only suitable for ceiling mounting and has a tiltable lens mount. The lens tilt angle in relation to the ceiling can be adjusted between **0° and -90°** using two screws (see fig). The v25 is available with **optional vandalism protection** (stainless steel ring and reinforced dome).



Other Features Of The v25:

- The new standard-bearer for low-light performance, **MOBOTIX 6 Megapixel Moonlight Technology**, is also used in the v25; it allows the camera to produce usable images even in very poor light conditions (< 1 lux). MOBOTIX cameras use the shortest possible exposure times, allowing them to deliver sharp, detailed videos and images of moving objects, without the motion blur generated by other camera systems.
- Standard **microSD card storage** including a pre-installed 4GB card
- Connection for the **MX-Bus-IO expansion module** (MX-OPT-IO3-INT, see fig.) that can be attached and is available as an accessory
- Including **MxAnalytics** for object counting and heat maps – designed for indoor scenarios like wholesale and retail, museums or education and health facilities.



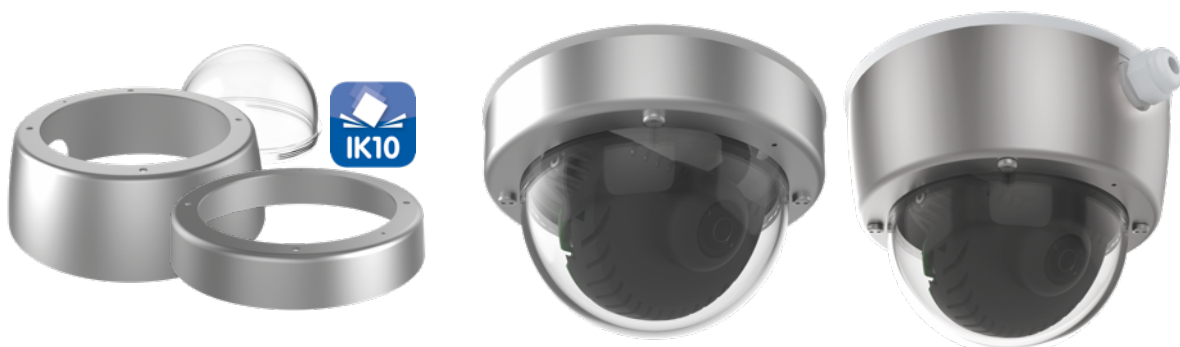


Easy To Install On Any Ceiling

Using the mounting materials included, the v25 can be quickly and easily mounted on all ceilings that can be equipped with a small cable guide opening for hidden Ethernet/PoE cables (behind ceiling tiles, for instance) and two-wire connections (only for optional external devices and sensors).

To mount the camera on a ceiling where the cable(s) cannot be hidden/laid under plaster (e.g., a concrete ceiling) and/or to expand the system to include a two-way communication function, MOBOTIX offers an **on-wall set with integrated microphone and speaker for the v25 (Available May 2016, in black or white)**. Another advantage of this on-wall set is that the housing includes access-protected connectors for any two boards from the MOBOTIX interface boxes, allowing for expanded functionality.

With the new **MxTubeMount** (see next section), the v25 (with or without on-wall set with audio) can be mounted to hang from unstructured ceilings such as in supermarkets, airports, warehouses, etc.



Top-Notch Protective Equipment Makes The v25 An Attractive, Affordable Indoor Vandalism Camera

For public buildings and high-security environments like prisons or military facilities, MOBOTIX also offers a vandalism set for the v25 that includes a sturdy stainless steel ring (matt), a reinforced 3-mm polycarbonate dome and security screws.

The optional protective equipment provides complete, reliable protection for the housing (protection class IK10 planned) and is available in **two versions**, for a v25 with or without an on-wall set. The stainless steel ring for the on-wall system is designed to ensure that the audio functions remain available.

Model Versions Of The v25:

MX-v25-B036 (MSRP: €448)

White v25 **complete camera** with 6MP **day sensor** and factory-installed, sharply focused ultra wide angle lens B036 (f/1.8, 103° x 77°)

MX-v25-BOD1 (white, MSRP: €388) and MX-v25-BOD1-b (black, MSRP: €388)

White or black v25 **camera module** (body without lens) with 6MP **day sensor** (color)












MX-v25-BOD1-N (white, MSRP: €388) and MX-v25-BOD1-N-b (black, MSRP: €388)

White or black v25 **camera module** (body without lens) with 6MP **night sensor** (black and white)

The light-sensitive HD premium lenses with aperture f/1.8 and maximum horizontal field of view of 122° (ultra wide angle) to 17° (distance telephoto) with 6MP full image can be easily mounted on any body using the red lens wrench (included; see fig).



v25 – Highlights

	Compact and discreet, manually panable and tiltable (0° to -90°) 6MP Moonlight Camera for ceiling mounting indoors (IP20, 0°C to 40°C (32°F to 104°F)), two-way communication function optionally available with on-wall set
	Professional protection with optional vandalism set (stainless steel ring and reinforced dome)
	The most light-sensitive MOBOTIX sensor lens technology ever; very low illumination requirements for day version: 0.1 lux (t = 1/60 s), for the night version: 0.02 lux (t = 1/60 s)
	Maximum image size: 6MP in special format 3:2 (3072 x 2048 pixels)
	Wide selection of lenses from distance telephoto to ultra wide angle
	With its extremely reliable and high-quality technical components, the camera is also perfect for continuous operation in professional applications (MTBF > 80,000 hours)
	Comes standard with MxAnalytics video analysis tools (used, for instance, to display customer traffic flows in a showroom)
	Including shock detector (alarm sounds in case of impact or vibration), alarms via e-mail/FTP/VoIP (SIP), event recording onboard (microSD card) or directly on NAS
	When installed in a corner, one single v25 with the ultra wide angle lens records the entire space with no blind spots, thus replacing four conventional CCTV cameras
	Available with either day or night sensor (color or black/white image) and perfectly suited to demanding indoor applications with poor light conditions
	Power supply via Ethernet cable (PoE IEEE 802.3af, class 2), low power consumption of typically only 4 W

v25 Indoor Camera With 6MP Moonlight Image Sensor: Technical Data

Model versions	v25-D036 (white), v25 body day and body night (body without lens, white or black)
Compatible MOBOTIX HD premium lenses	MX-B036 ultra wide angle • MX-B041 super wide angle • MX-B061 wide angle • MX-B079 standard • MX-B119 telephoto • MX-B237 distance telephoto
Operating conditions	Ambient temperature 0°C to 40°C (32°F to 104°F), protection class IP20 (protected from foreign bodies with diameters 12.5 mm or larger, not waterproof)
Intended use	Indoors • Not for use in areas at risk of explosions
Diameter	143 mm (max. 148 mm with accessories)

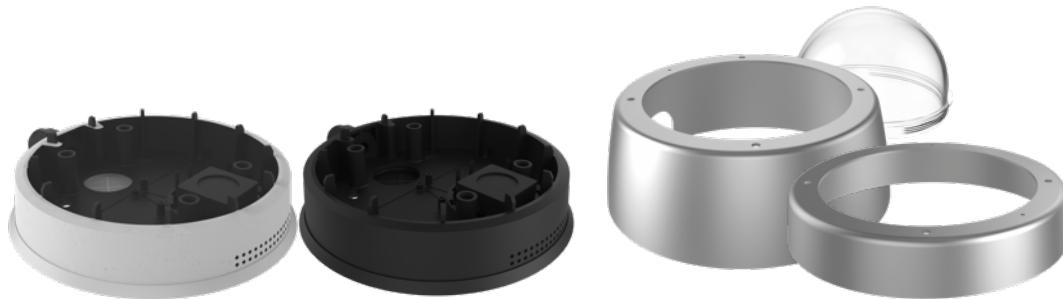
v25 Indoor Camera With 6MP Moonlight Image Sensor: Technical Data

Depth, weight (p25 without ETH cable)	90 mm, min./typ./max 255/270/350 (incl. lens and accessories)
Image sensor	1/1.8" CMOS sensor, 6MP (3072 x 2048), progressive scan
Lens tilting angle	0° to -90° (desired position can be securely fixed using two screws)
Minimum light sensitivity	Color sensor: 0.1 lux at 1/60 sec; 0.005 lux at 1 sec B&W sensor: 0.02 lux at 1/60 sec; 0.001 lux at 1 sec
Maximum image size	6MP (3072 x 2048 pixels)
Maximum frame rates MxPEG (fps)	30@HD (1280 x 720), 30@MEGA, 15@QXGA, 10@5MP, 8@6MP
Maximum frame rates MJPEG (fps)	15@HD (1280 x 720), 12@MEGA, 6@QXGA, 4@5MP, 4@6MP
Operation and display elements	Two buttons (protected from manipulation under the dome) • Two status LEDs
Audio	v25 on-wall audio set including integrated microphone and speaker available soon; audio also possible via ExtIO (MOBOTIX accessory)
Image processing	MxLEO, backlight compensation, automatic white balance, image correction, panorama correction
Image formats	Freely configurable format 4:3/8:3/16:9 • User-defined formats (image cropping, e.g., 5MP, QXGA, full HD, MEGA)
Multi-streaming	Yes
PTZ	Digital pan/tilt/zoom, continuous 8x zoom
Intelligent video analysis	MxActivitySensor, video motion analysis, MxAnalytics (heat maps and counting corridor reports)
DVR	Via integrated microSD card • Externally on USB device • Externally on NAS (max. of 4 TB) • Separate live image feed and full image recording • MxFFS with archiving function • Pre- and post-alarm images • Automatic DVR surveillance including error notification
Alarm/event management	MxActivitySensor • Video motion analysis • Temperature sensor • Shock detector • Illumination sensor • Further sensors/IO via additional devices • Alarm notification via e-mail, FTP, VoIP
Video telephone	SIP client and server; two-way communication via on-wall set with audio or MX-ExtIO
Security	User/group management, SSL connection, IP address filter, IEEE 802.1x, intrusion detection, digital image signature, tamper detection
Protocols	IPv4, IPv6, HTTP, HTTPS, FTP, RTP, UDP, TCP, SNMP, SMTP, DHCP (client or server), NTP (client or server), SIP (client or server)
Interfaces	Ethernet (MxRJ45), MiniUSB • With optional MX-Bus-IO module with two additional signal outputs
Supply voltage	PoE (IEEE 802.3af, class 2), power consumption of max. 4.5 watts (without accessories)
Certifications	EMC (EN 55022, CISPR 22, EN 55024, EN 61000-6-1/2) • Further standards (FCC part 15 subpart B, CFR 47, AS/NZS 3548)
(Integrated) software functions	Digital zoom • Programmable exposure windows • Snapshot recording • Full feature recording (MxFFS archive, continuous recording, full image recording) • Time and event control • Time tables including holidays • Web functions • Logo generator • Flexible event logic • Master/slave arming • Multiple time-controlled privacy zones • Remote alarm notification • Programming interface/HTTP API
MOBOTIX Video Management Software (VMS) available free of	MxManagementCenter MxMC, MxControlCenter MxCC, MxEasy, MOBOTIX App
Accessories	- On-wall set including microphone and speaker - Vandalism set, also for the v25 with on-wall audio set - MX-OPT-IO3-INT expansion module, interface boxes, MX-ExtIO, NPA PoE Set



Ordering Information For The v25 Indoor Camera (Body And Complete Camera) With 6MP Moonlight Sensor:

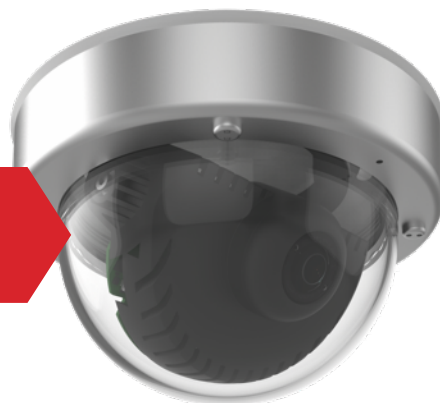
Order Number	EAN	Description	MSRP EUR	Available
MX-v25-BOD1	4047438027571	v25 camera module (body) with image sensor and lens mount • Lens to be ordered individually (MX-B036 to MX-B237, focal length 3.6 to 23.7 mm, f/1.8) • Manually adjustable lens tilt angle 0° to -90° • 6 Megapixel Moonlight Sensor, color (day) • Max. image size: 6MP (3072 x 2048) • IP20, 0 to 40°C (32 to 104°F) • Lens cover with sealing ring (polycarbonate, 1.5 mm) • Internal DVR: 4 GB microSD • Temperature sensor, illumination sensor, movement sensor, MxActivitySensor, MxAnalytics • 0.5 m/1.6 ft Ethernet patch cable • Interfaces: Ethernet 10/100 (RJ45), USB, slot for IO module MX-OPT-IO3-INT • Housing color: white	388	31 March 2016
MX-v25-BOD1-N	4047438027588	v25 camera module (body) with image sensor and lens mount • Lens to be ordered individually (MX-B036 to MX-B237, focal length 3.6 to 23.7 mm, f/1.8) • Manually adjustable lens tilt angle 0° to -90° • 6 Megapixel Moonlight Sensor, B/W (night) • Max. image size: 6MP (3072 x 2048) • IP20, 0 to 40°C (32 to 104°F) • Lens cover with sealing ring (polycarbonate, 1.5 mm) • Internal DVR: 4 GB microSD • Temperature sensor, illumination sensor, movement sensor, MxActivitySensor, MxAnalytics • 0.5 m/1.6 ft Ethernet patch cable • Interfaces: Ethernet 10/100 (RJ45), USB, slot for IO module MX-OPT-IO3-INT • Housing color: white	388	31 March 2016
MX-v25-BOD1-b	4047438027656	v25 camera module (body) with image sensor and lens mount • Lens to be ordered individually (MX-B036 to MX-B237, focal length 3.6 to 23.7 mm, f/1.8) • Manually adjustable lens tilt angle 0° to -90° • 6 Megapixel Moonlight Sensor, color (day) • Max. image size: 6MP (3072 x 2048) • IP20, 0 to 40°C (32 to 104°F) • Lens cover with sealing ring (polycarbonate, 1.5 mm) • Internal DVR: 4 GB microSD • Temperature sensor, illumination sensor, movement sensor, MxActivitySensor, MxAnalytics • 0.5 m/1.6 ft Ethernet patch cable • Interfaces: Ethernet 10/100 (RJ45), USB, slot for IO module MX-OPT-IO3-INT • Housing color: black	388	31 March 2016
MX-v25-BOD1-N-b	4047438027663	v25 camera module (body) with image sensor and lens mount • Lens to be ordered individually (MX-B036 to MX-B237, focal length 3.6 to 23.7 mm, f/1.8) • Manually adjustable lens tilt angle 0° to -90° • 6 Megapixel Moonlight Sensor, B/W (night) • Max. image size: 6MP (3072 x 2048) • IP20, 0 to 40°C (32 to 104°F) • Lens cover with sealing ring (polycarbonate, 1.5 mm) • Internal DVR: 4 GB microSD • Temperature sensor, illumination sensor, movement sensor, MxActivitySensor, MxAnalytics • 0.5 m/1.6 ft Ethernet patch cable • Interfaces: Ethernet 10/100 (RJ45), USB, slot for IO module MX-OPT-IO3-INT • Housing color: black	388	31 March 2016
MX-v25-D036	4047438027649	IP indoor camera for ceiling mounting • Manually adjustable lens tilt angle 0° to -90° • 6 Megapixel Moonlight Sensor, color (day) • Ultra wide lens B036 (focal length 3.6 mm, f/1.8, 103° x 77°) • Max. image size: 6MP (3072 x 2048) • IP20, 0 to 40°C (32 to 104°F) • Lens cover with sealing ring (polycarbonate, 1.5 mm) • Internal DVR: 4 GB microSD • Temperature sensor, illumination sensor, movement sensor, MxActivitySensor, MxAnalytics • 0.5 m/1.6 ft Ethernet patch cable • Interfaces: Ethernet 10/100 (RJ45), USB, slot for IO module MX-OPT-IO3-INT • Housing color: white	448	31 March 2016



Ordering Information For The v25 On-Wall Sets With Audio And Vandalism Sets:

Order Number	EAN	Description	MSRP EUR	Available
MX-MT-OW2-AUD	4047438027632	On-Wall Set with Audio for v25 • Consists of on-wall mount, mounting parts, integrated speaker, microphone and camera plug-in connection cable • Enables on-wall cabling of the camera and integrates two additional Interface Box modules • Housing color: white	98	May 2016
MX-MT-OW2-AUD-b	4047438027670	On-Wall Set with Audio for v25 • Consists of on-wall mount, mounting parts, integrated speaker, microphone and camera plug-in connection cable • Enables on-wall cabling of the camera and integrates two additional Interface Box modules • Housing color: black	98	May 2016
MX-MT-v25-V	4047438027601	Vandalism Kit for v25 • Stainless steel vandalism ring (matt) with safety screws • Protects the camera housing (only without On-Wall Set) • Reinforced lens cover (polycarbonate, 3 mm)	98	31 March 2016
MX-MT-v25-V-XL	4047438027625	Vandalism Kit for v25 with On-Wall Set • XL stainless steel vandalism ring (matt) with safety screws • Protects the camera housing (only with mounted On-Wall Set) • Reinforced lens cover (polycarbonate, 3 mm)	98	May 2016

**v25 Introduction Offer
until 31 March 2016**
Incl. free-of charge vandalism kit!



Order Information v25 Introduction Offer (v25-D036 With Vandalism Kit):

Order Number	EAN	Description	MSRP EUR	Available until
MX-v25-IntroSet	4047438027694	Indoor camera MX-v25-D036 plus Vandalism Kit MX-MT-v25-V (delivered with reinforced 3 mm polycarbonate lens cover only)	448	31 March 2016

4. MxTubeMount & MxTube Camera Ceiling Suspension



Suspended Camera Mounting, Even On Unstructured Ceilings And Beams:

With the new MxTubeMount, the MOBOTIX cameras **M15**, **M25**, **v25** and the **PTMount/PTMount-Thermal** – as well as the cameras **D25**, **Q25**, **c25** and **p25** when using their optional on-wall set – can be mounted to hang from unstructured ceilings such as in supermarkets, airports, warehouses, etc. The MxTubeMount will be delivered with a special safety wire as drop down protection. The MxTubeMount can be mounted using a standard, commercially available tube of up to 2 meters in length and weighing up to 2.5 kg with an **external diameter of 30 mm or 26.9 mm** (26.9 mm corresponds to R3/4" steel tube according to DIN 2440). Alternatively, MOBOTIX offers anodized **MxTube** aluminum tubes perfectly tailored to the MxTubeMount in lengths of 1 or 2 meters (diameter 30 mm, wall thickness 2 mm).



Ordering Information For The MxTubeMount And MxTube:

Order Number	EAN	Description	MSRP EUR	Available
MX-MT-TUBE	4047438027557	MxTubeMount ceiling suspension system • For suspended ceiling installation of the cameras M15/M25/v25/PTMount/PT-Mount-Thermal (each can be attached directly to the MxTubeMount) and of the cameras D25/Q25/c25/p25 (each can only be attached to the MxTubeMount when using the optional on-wall mounting set of the camera) • Incl. drop down protection • Additionally needed suspension tube MxTube with a length of 1m (3.3 ft) or 2 m (6.6 ft) to be ordered separately (MX-MT-TUBE100, MX-MT-TUBE200) • Alternative suspension with customary tubes: outer diameter 30 mm or 26.9 mm (R3/4" accordint to DIN 2440), max. length: 2 m (6.6 ft), max. weight: 2.5 kg (5.5 lb), color/material of choice	58	End of April 2016
MX-MT-TUBE100	4047438027687	Suspension tube for MxTubeMount • Length: 1 m (3.3 ft) • Anodized aluminium • Outer diameter: 30 mm, wall thickness: 2 mm	40	End of April 2016
MX-MT-TUBE200	4047438027564	Suspension tube for MxTubeMount • Length: 2 m (6.6 ft) • Anodized aluminium • Outer diameter: 30 mm, wall thickness: 2 mm	58	End of April 2016

5. D15 Body Including Standard And XL Dome



New Scope Of Delivery For The D15 Camera Module (Body):

Thanks to the modular construction of the D15 DualDome camera platform – with the components body, lens module/double lens bridge and lenses that can be ordered separately – users can configure and complete the appropriate D15 camera model for any application.

It is now also possible for users to assemble the special D15 **DNight-Fix** and **Pano/180°** models (which were previously only available as complete cameras) themselves using the newly available **double lens bridges** (MX-D15-SM-FIX, MX-D15-SM-PAN and MX-D15-SM-PAN-N). However, because these cameras – unlike all other D15 versions – each require a **larger XL dome**, all D15 camera modules (bodies) will be shipped with **one standard and one XL dome** made of clear 1.5-mm thick polycarbonate starting on 1 April 2016. This ensures that the right dome is available for every possible camera configuration. The Order Number and price for the D15 body remain the same.

MOBOTIX also offers an optional reinforced standard vandalism dome made of 3-mm thick polycarbonate for the D15, as well as a tinted standard dome and a tinted XL dome (see next section).

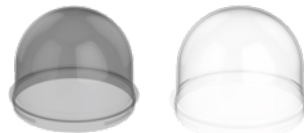
Ordering Information For The D15 Camera Module (Body):

Order Number	EAN	Description	MSRP EUR	Available
MX-D15Di-Sec	4047438017978	IP camera module for connecting one or two lens units or a double lens carrier FIX/PAN (to be ordered individually) • Image sensor options (via lens unit/carrier): 6 megapixels, color (day) and/or B/W (night) • Lens options (via lens unit): L20/B036 to L135/B237, horizontal image angle 103° to 15° • Max. image size (per image sensor): 6MP (3072 x 2048 pixels) • Operating conditions: IP54 without accessories, IP65/IK10 with Outdoor Wall Mount or IP66/IK10+ with Vandalism Set, each -30 to 60°C (-22 to 140°F) • Internal DVR: 4 GB MicroSD • Camera components: speaker, microphone, PIR sensor, temperature sensor, shock detector, MxActivitySensor, ethernet patch cable 0.5 m/1.65 ft • Incl. two lens covers (1x Standard, 1x XL) • Interfaces: Ethernet 10/100 (RJ45), MxBus, USB; IO and RS232 via additional MX Interface Box	948	31 March 2016

Please note: Until 30 March 2016, the D15 will still be delivered with two standard domes (1x transparent, 1x tinted), and the double lens bridge will be shipped with a transparent XL dome.

6. XL Replacement Domes/Vandalism For (Dual)Dome Cameras

To round out the range of replacement part accessories, all **XL and vandalism domes** available for the D15 and D25 will also be listed individually in the official MOBOTIX price list.



Ordering Information For **XL Domes For D15** (For DNight-Fix/Pano/180°):

Order Number	EAN	Description	MSRP EUR	Available
MX-D15-DCT-XL	4047438027519	Suitable for: D1x Pano/180° and DNight-Fix models • Polycarbonate (1.5 mm)	28	Now
MX-D15-DCS-XL	4047438027526	XL dome • Suitable for: D1x Pano/180° and DNight-Fix models • Tinted (50%) for particularly bright environments • Polycarbonate (1.5 mm)	28	Now



Ordering Information For **Vandalism Standard Dome For D15** (NOT For DNight-Fix/Pano/180°):

Order Number	EAN	Description	MSRP EUR	Available
MX-D15-DCT-V	4047438027533	Reinforced dome (polycarbonate, 3 mm) for D1x vandalism sets • Not suitable for Pano/180° and DNight-Fix models (XL dome required)	38	Now



Ordering Information For **Tinted Standard Dome For D15** (NOT For DNight-Fix/Pano/180°):

Order Number	EAN	Description	MSRP EUR	Available
MX-D15-OPT-DCS	4047438015639	Standard dome • Suitable for D1x • Tinted (50%) for particularly bright environments • Not suitable for Pano/180° and DNight-Fix models (XL dome required) • Polycarbonate (1.5 mm)	28	Now



Ordering Information For **Vandalism Standard Dome For D25**:

Order Number	EAN	Description	MSRP EUR	Available
MX-D25-DCT-V	4047438027700	Reinforced dome (polycarbonate, 3 mm) for D2x vandalism sets • With sealing ring	38	Now

7. Schedule

Now Available For Order (Applies To MOBOTIX Partners And End Customers)

- Indoor dome v25 and vandalism set (shipping from Thursday, 31 March 2016)
- On-wall set with audio and corresponding vandalism set for v25 (shipping scheduled from May 2016)
- D15 body with new scope of delivery (shipping from Thursday, 31 March 2016)
- MxTubeMount and MxTube (shipping from end of April 2016)
- XL replacement dome (for D15) and vandalism (for D15/D25) (available now)

The **camera software 4.4.0.x** for all current MOBOTIX cameras is scheduled to be available to download free of charge from **Tuesday, 29 March 2016**, while the **MxManagementCenter 1.2** becomes available to download free of charge starting from **April 2016** on the MOBOTIX website.

In order to become familiar with the latest software functions **before the official release**, you can find preview versions of the camera software 4.4.0.x and MxMC 1.2 by the end of this week here: <http://beta.mobotix.com>

Products On The MOBOTIX Website (Starting March 2016):

www.mobotix.com > Products (for Hardware)

www.mobotix.com > Support > Software Downloads (for Software)

www.mobotix.com > Products > **Price List** (updated PDF for download)

Instruction Manuals/Quick Installs For New Hardware

www.mobotix.com > Support > Manuals

Product Training Seminars: The current dates can be found on the MOBOTIX website under Partners > Seminars.